



INSTALLATION INSTRUCTIONS

FOR PROTEKTOR CARPORT GUTTERS

PROTEKTOR has been manufacturing gutters made of plastic since 1964. They are plasticiser-free and cannot become brittle. The high-quality raw material ensures the best possible impact strength, UV resistance and dimensional stability.

According to DIN EN 12056-3 and DIN 1986-100, a calculation of the rainwater run-off should be made for the respective property in order to determine the exact gutter size. The following table refers to the relevant standards and can be used to select the correct PROTEKTOR gutter.

A professional installation always starts with the selection of the right gutter. The specified m² value of the roof surface area provides a starting point for finding the correct gutter size.

PROTEKTOR gutters box-shaped		
Roof area to be drained	Rainwater downpipe	box-shaped gutter
up to 80 m ²	DN 75 / DN 100	6-pcs. (NW 115)

The installation of PROTEKTOR gutters is carried out in simple steps. The specifications of the installation instructions must be observed to ensure permanent functionality.

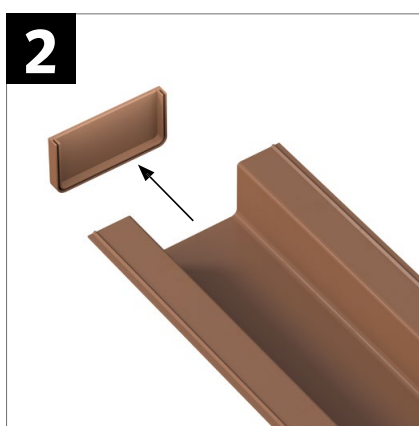


INSTALLATION INSTRUCTIONS FOR PROTEKTOR CARPORT GUTTERS



Length of the carport gutter

The length of the carport gutter is determined by the length of the purlin minus a distance to the end headboards of approx. 10 mm. The cut edge of the gutter must be cleaned of sawing residues.



Installation of end pieces

End pieces are glued to the ends of the carport gutter. These are to be glued with the release adhesive recommended by PROTEKTOR. The adhesive is applied in a line into the end piece connector. The two parts must be joined within the „open-time”: See data sheet of the release adhesive Art. No. 81250.

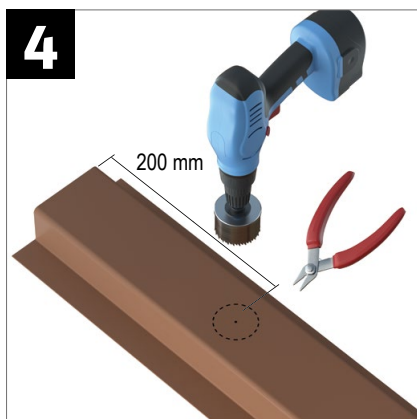


Position of the drain socket

The drain socket must be positioned in such a way that the downpipe is not damaged when the carport gutter moves. This can be ensured by a curved connection or positioning near a fixed point.

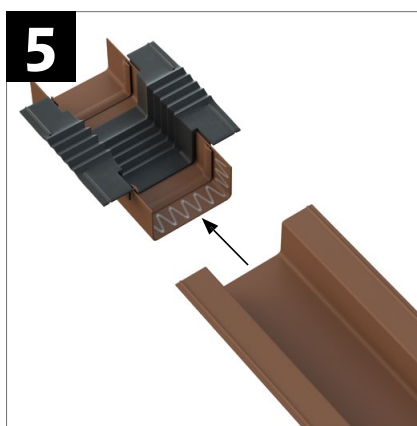


INSTALLATION INSTRUCTIONS FOR PROTEKTOR CARPORT GUTTERS



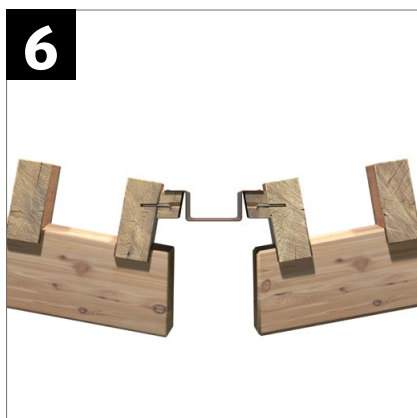
Marking and cutting out the hole

The drain hole must be placed centrally, at a distance of at least 200 mm from the end of the channel.
The diameter of the hole must be selected according to the specifications of the screw socket.
The hole can be made with the help of a hole-saw or sheet metal shears.



Installation of carport gutter expansion connectors

Always use the maximum technically applicable gutter length. If the length of 6.0 m is exceeded, an expansion connector must be inserted centrally or at even intervals.
The expansion connector and carport gutter are to be glued together with the adhesive recommended by PROTEKTOR. For this purpose, the adhesive is applied in waves to the adhesive surface of the expansion connector.
The joining of the two parts must take place within the „open-time”: See data sheet of the release adhesive art. no. 81250).

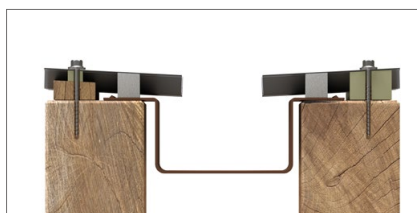


Tension-free/constraint-free surface

The legs of the carport gutter must extend over the entire length of the purlin. The surface must be as horizontal as possible. The carport gutter must be installed in alignment without tension or constraint.

Examples of stress-free assembly:

- Lateral wooden slats offset downwards by 10 mm, attached to the purlins.
These serve as a support for the legs of the carport gutter.
- Spacers (calottes) between roofing and purlins.



The offset/spacer ensures that no clamping effect is created by the roofing and that the carport gutter can move thermally independently of the roof construction.
The slope of the carport gutter may be between 0-3 mm/m.



INSTALLATION INSTRUCTIONS FOR PROTEKTOR CARPORT GUTTERS



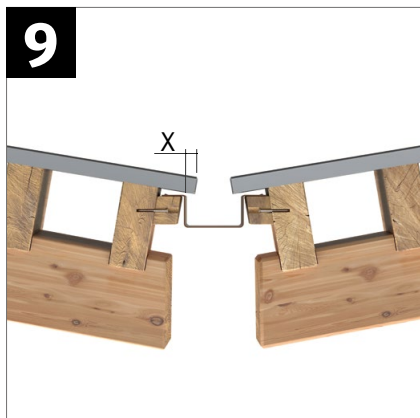
Create fixed points

To prevent the carport gutter from „wandering“, a fixed point must be formed in the centre of each gutter section. The fixed point is to be made by screwing or nailing the gutter leg on both sides.



Mounting the downpipe

The downpipe is fixed plumb every 2 m, but at least on each downpipe section, with a clamp. Clamps must be placed at least 20 cm from the edge of the building. Arches resp curves and junction parts may only be plugged in.



Roofing

The roof covering is fastened to the purlins and must not pinch the carport gutter. The roof covering is to be led into the gutter with an overhang.

PROTEKTORWERK

Florenz Maisch GmbH & Co.KG

Postfach 1420, D-76554 Gaggenau
Viktoriastr. 58, D-76571 Gaggenau

Tel +49 (0) 72 25 / 9 77 0
Fax +49 (0) 72 25 / 9 77 1 11

info@protektor.com
www.protektor.com

